

THE MOBILE TRAINEE

The Mobile Trainee is a portable fire training unit featuring a burn room. Complete with a trailer and leveling feet, the Mobile Trainee allows fire service instructors to conduct live Class A or B fire evolutions at multiple locations.



Wheaton, Missouri

All doors /shutters are operational from both sides.

Trailer:

Gooseneck Cargo Van

GVWR: 21,000 lbs.

O.A.L.: 30' 8-1/4"

O.A.W.: 8' 6"

O.A.H.: 12' 8-5/8"

Floor Heights from Grade: 2' 11-5/8"

Axles: (3) 7,000 lbs., Dexter

Wheels: (6) 16" Rims

Tires: (6) 235/85R, 10 Ply

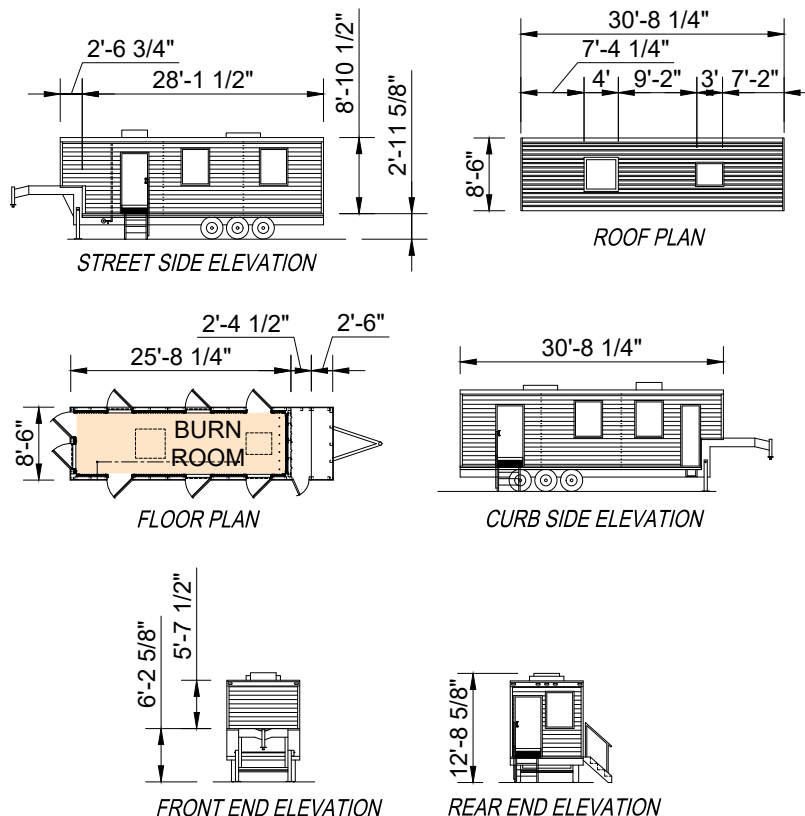
Hitch: 2" King Pin, Adjustable

Brakes: Electric, Each Axle

Levelers: (2) 2-Speed Double Leg, 50,000 lbs.

Structural Steel Framing: 24" on Center

Formed Trailer Cross Members: 12" on Center



Body:

16-Gauge Steel Wall & Ceiling Framing

Prepainted Steel Exterior, 18-Gauge

11-Gauge Steel Tread Floor Plate

18-Gauge Box Ribbed Steel Roof

(3) Entrance Doors with Removable Stairs

(5) 3' x 4' Window Openings with Steel Shutters

(1) 4' x 4' Roof Chop-Out Curb

(1) 2'6" x 3' Bilco Roof Hatch

Front Storage Area with Cargo Door

Lights: Running, Parking, Turning and Brake

Burn Room:

25' 8-1/4"L x 8' 6"W x 8' 10-1/2"H

3-Head Sprinkler System with 1 1/2" Connection

(1) Westec® Insulation System

(1) Scout Temperature Monitoring System



Wilmar, Minnesota

Wilmar, Minnesota



Wilmar, Minnesota

Wilmar, Minnesota